

Numere cadastrale	UAT	Adresa imobilului
nr.cad. 2083, nr.cad. 2152, nr.cad. 2151, nr.cad. 1946, nr.cad. 1945,	Sacele	Sacele, Str. Campului f.n.

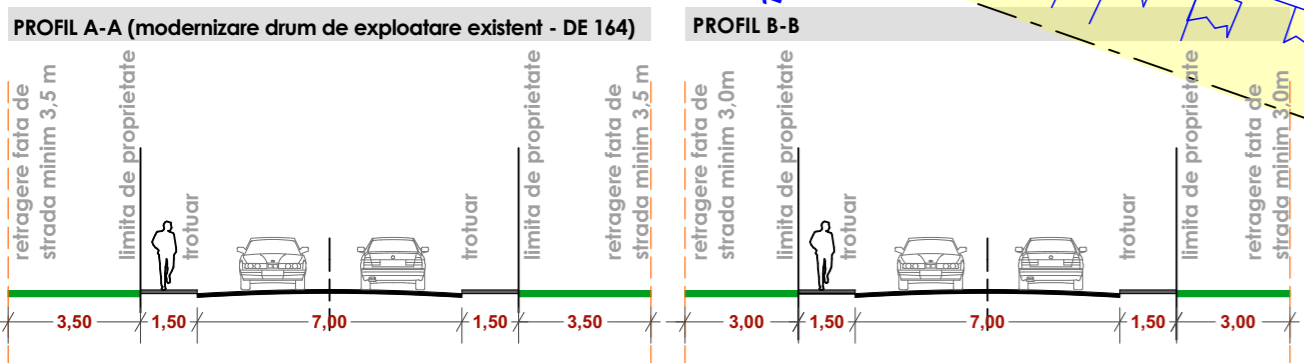
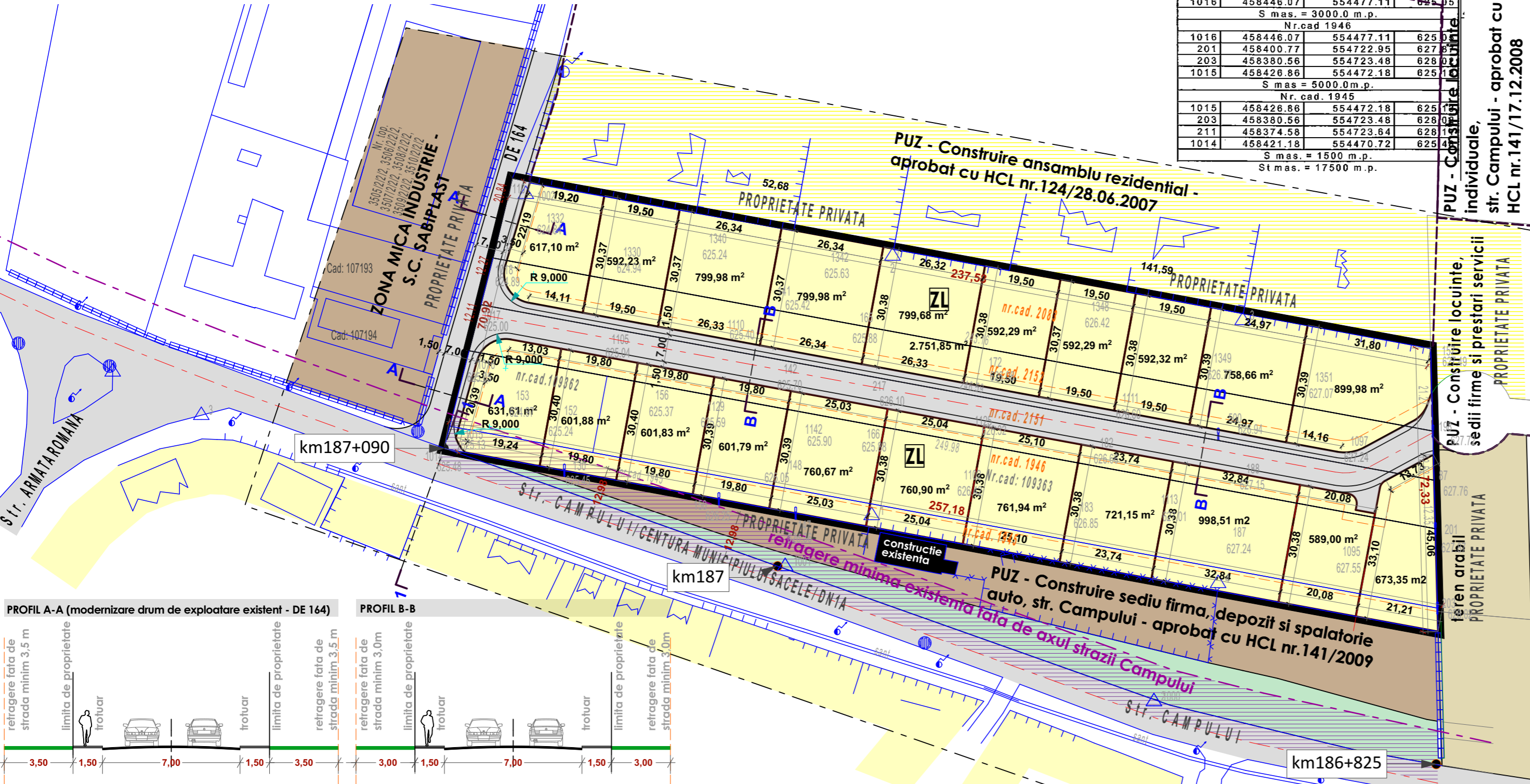
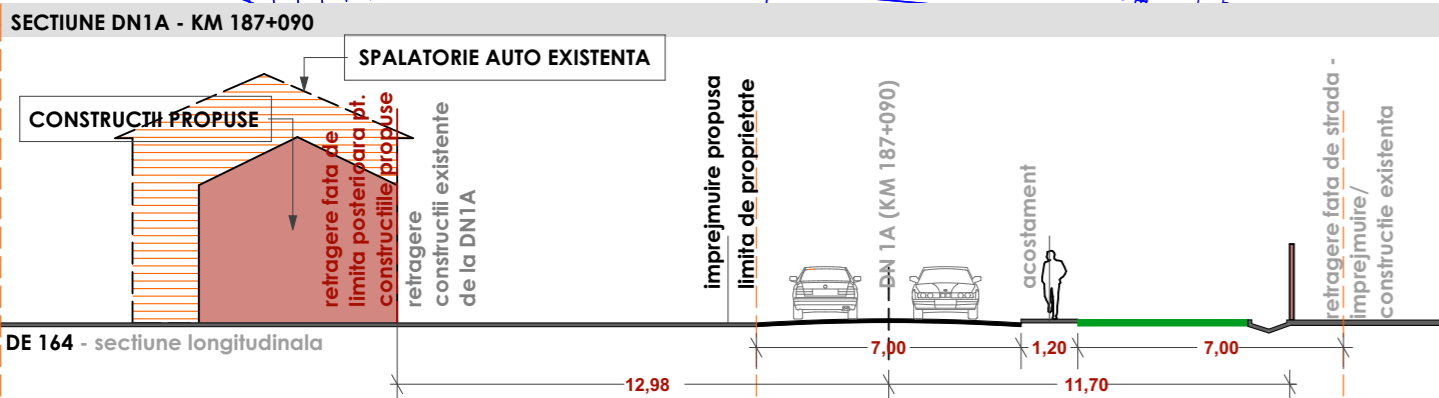
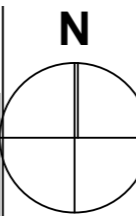
BENEFICIARI Nicolae Savel, Nicolae Mioara, Suci B. Iutka, Bichir Gabriel-Marius, Mischilea Emilian

LEGENDA

- OBIECTUL STUDIULUI
- ZONA STUDIATA
- LIMITE CADASTRALE EXISTENTE
- LIMITE CADASTRALE PROPUSE
- ZONA LOCUINTE
- ZONA CIRCULATII - CAROSABIL+TROTUARE
- RETRAGERI CONSTRUCTII PROPUSE FATA DE STRADA SI LIMITA POSTERIOARA A PARCELELOR
- RETRAGERE CONSTRUCTII EXISTENTE FATA DE AXUL STRAZII CAMPULUI

INVENTAR DE COORDONATE
Sistem de proiectie STEREO 70
Sistem de referinta Marea Neagra

Nr.pct	x	y	z
110	458489.94	554488.09	624.78
157	458446.89	554721.74	627.49
198	458425.63	458425.63	627.72
1018	458469.69	554483.17	624.89
S mas = 5000.0 m.p.			
Nr.cad 2152			
1018	458469.69	554483.17	624.89
198	458425.63	458425.63	627.72
87	458413.11	554722.63	627.76
1017	458457.8	554480.12	625
S mas = 3000.0 m.p.			
Nr.cad. 2151			
1017	458457.8	554480.12	625
87	458413.11	554722.63	627.76
201	458400.77	554722.95	627.87
1016	458446.07	554477.11	625.05
S mas = 3000.0 m.p.			
Nr.cad 1946			
1016	458446.07	554477.11	625
201	458400.77	554722.95	627.87
203	458380.56	554723.48	628
1015	458426.86	554472.18	625
S mas = 5000.0 m.p.			
Nr.cad. 1945			
1015	458426.86	554472.18	625
203	458380.56	554723.48	628
211	458374.58	554723.84	628
1014	458421.18	554470.72	625
S mas = 1500 m.p.			
St mas = 17500 m.p.			



BILANT TERITORIAL	EXISTENT		PROPUSE	
	MP	%	MP	%
ZONA LOCUINTE	zona constr.	0.00	5 161.85	29.50
	accese	0.00	2 212.22	12.64
	spatii verzi	0.00	7 374.08	42.14
	total partial	0.00	14 748.15	84.28
CIRCULATII		0.00	2 751.85	15.72
TEREN ARABIL	17 500.00	100.00	0.00	0.00
TOTAL	17 500.00	100.00	17 500.00	100.00

102325 drum

102324

100880 (e terra)

A163/3/2 S=2,00ha

REGIM DE OCUPARE TEREN	R.H.MAX	POT	CUT
	P+1+M	35%	1.00



BRASOV str. Crisului nr.6, J08/1335/1997 C.U.I.:9829607
colectiv de elaborare:
arh. Gabriel Roznovat
urb.Raluca Baco
arh. Gabriel Roznovat

PUZ ZONA DE LOCUINTE
SACELE, STR. CAMPULUI F.N., JUD. BRASOV

beneficiar: Nicolae Savel, Nicolae Mioara, Suci B. Iutka, Bichir Gabriel-Marius, Mischilea Emilian

scara: 1/1 000
data: mai 2013

titlul plansei:
REGLEMENTARI URBANISTICE

proiect nr. 274.05.13
faza: P.U.Z.
plansa nr. U02